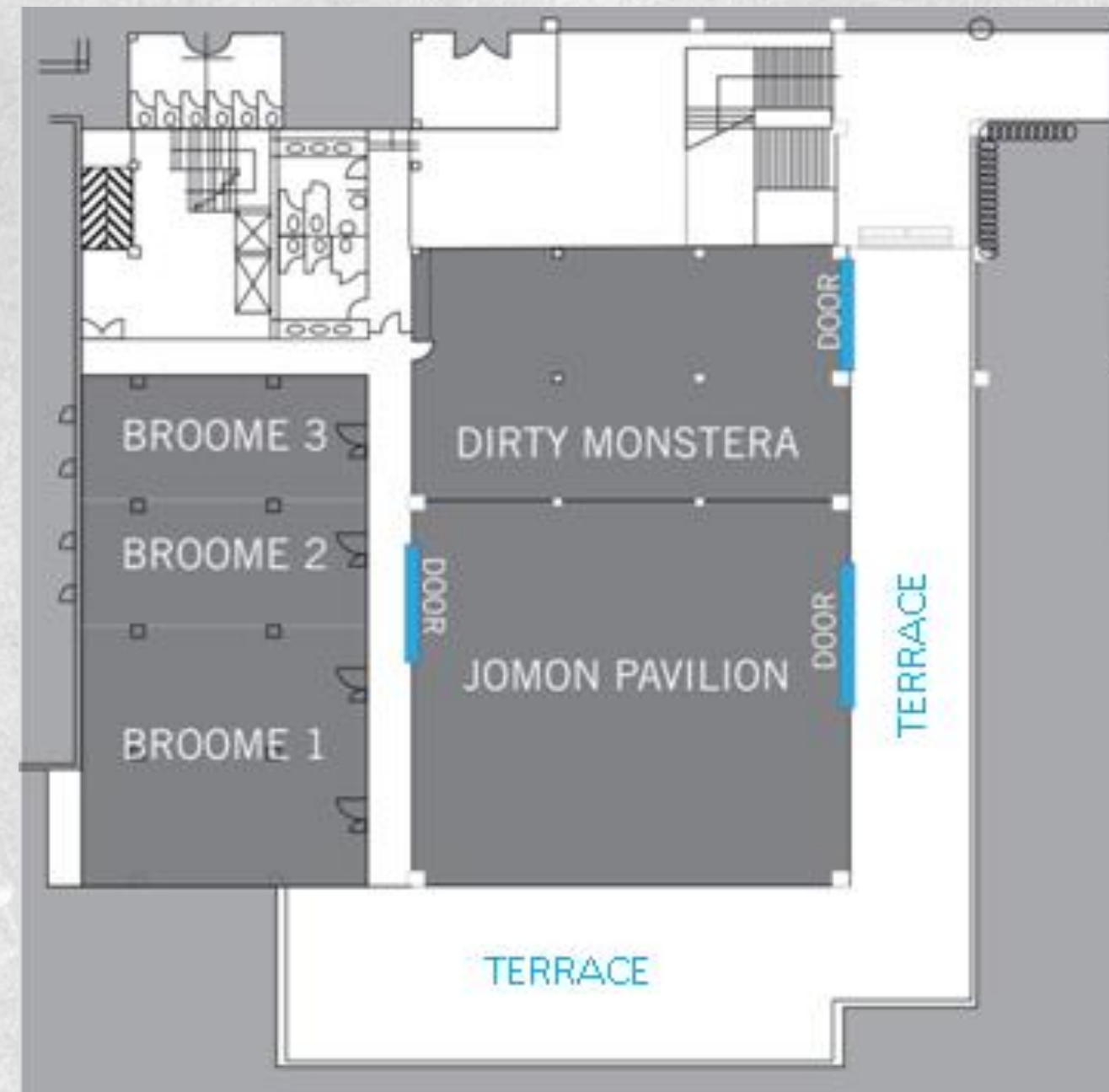


**BROOME 1 | BROOME 2 | BROOME 3**



Room	L. x W. x H. (m.)	Sqm.	Sq. ft.	Theatre	Classroom	U-shape	Boardroom	Rounds	Cabaret
<b>Broome 1, 2</b>	14.6 x 10 x 2.4	146 sqm.	1,571	100	60	40	40	60	36
<b>Broome 1</b>	10 x 10 x 2.4	100 sqm.	1,076	80	40	30	30	50	32
<b>Broome 2</b>	4.6 x 10 x 2.4	46 sqm.	495	25	16	n/a	12	16	12
<b>Broome 3 (Boardroom)</b>	5 x 10 x 2.4	50 sqm.	538	n/a	n/a	n/a	16	n/a	n/a



BROOME 1 | BROOME 2 | BROOME 3

